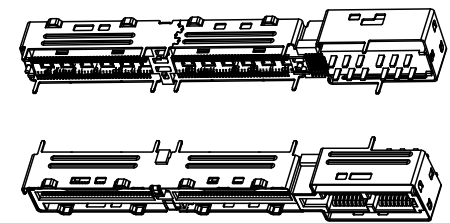
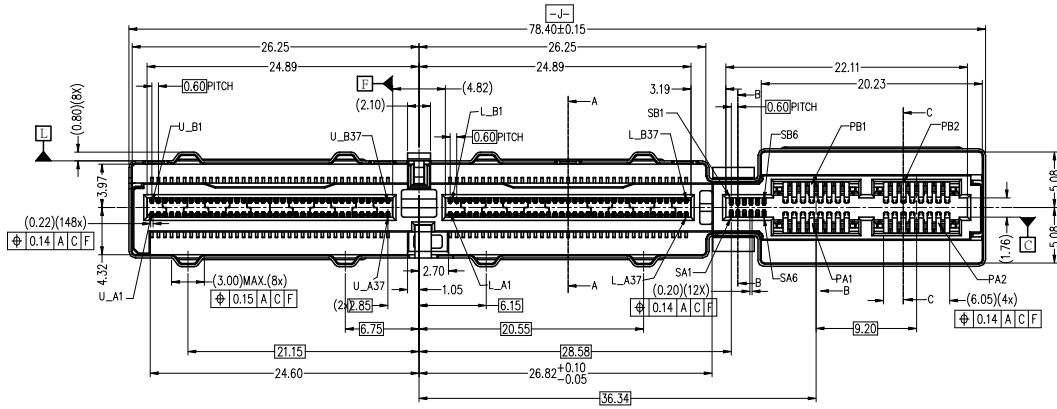


THIS DRAWING AND THE DATA DISCLOSED HEREIN OR HEREWITH IS NOT TO BE REPRODUCED USED OR DISCLOSED IN WHOLE OR IN PART TO ANYONE WITHOUT THE PERMISSION OF JESS-LINK PRODUCTS CO.,LTD.(JPC)

CUSTOMER DRAWING
DRWC-008614

REV.	ECN NO.	DESCRIPTION	MDF'D	APP'D	DATE
01		INITIAL DESIGN	Veera	Jason	10/13/2023
02		DRAWING NAME REVISED	Veera	Jason	11/28/2023
03					

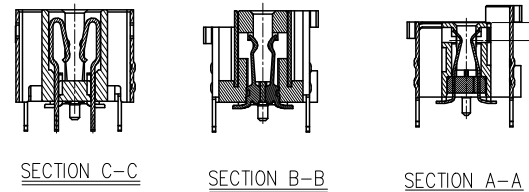
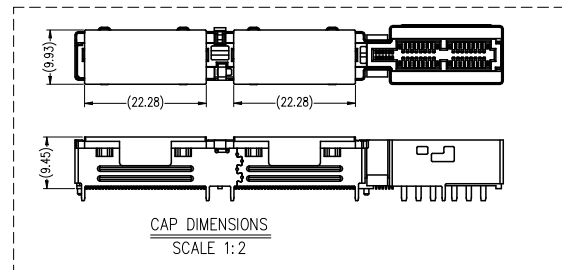
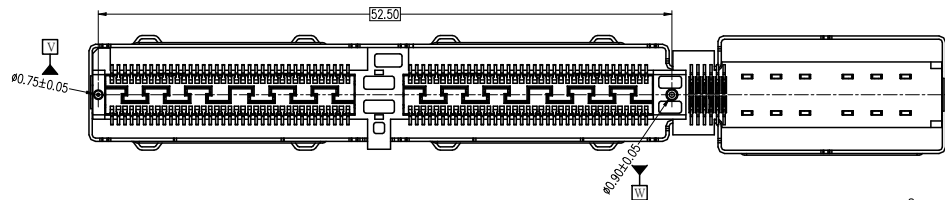
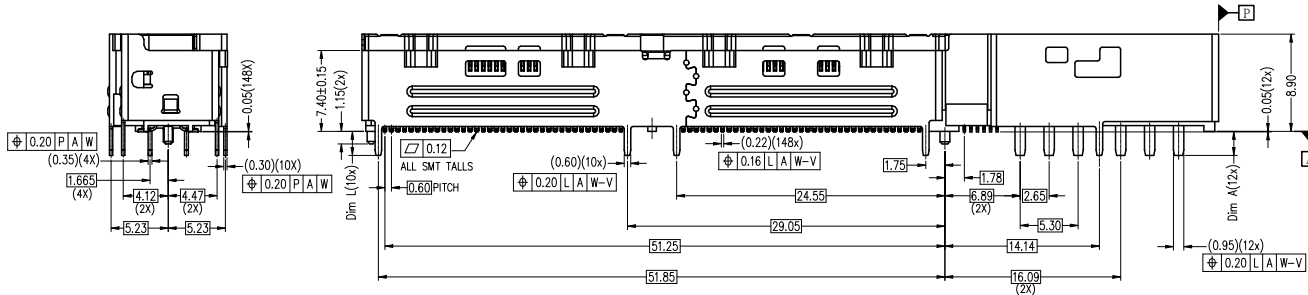
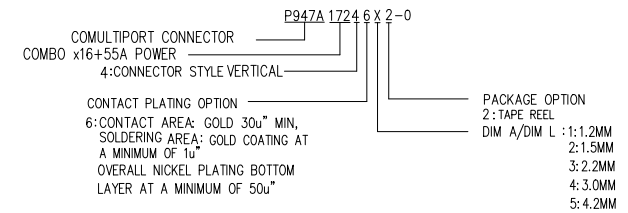


- 1.Materials:
 1.1 HOUSING: LCP, Color: Black
 1.2 MOLDING: LCP, Color: Black
 1.3 CAP: LCP, Color: Black
 1.4 Terminals: Copper alloy, T=0.20±0.01mm
 1.5 POWER Terminals: Copper alloy, T=0.35MM
 1.6 Sideband Terminals: Copper alloy, T=0.20MM
 1.7 Shell: Stainless T=0.30mm

- 2.Electroplating:
 Shell: Entirely plated with weldable nickel 100u" Min.
 Terminals: Entirely nickel-plated base 50u" Min; Contact area gold-plated 30u" Min; Soldering area gold-plated 1u" Min.
 POWER Terminals: Entirely nickel-plated base 50u" Min; Contact area gold-plated 30u" Min; Soldering area tin-plated 100u" Min.
 Sideband Terminals: Entirely nickel-plated base 50u" Min; Contact area gold-plated 30u" Min; Soldering area tin-plated 100u" Min.

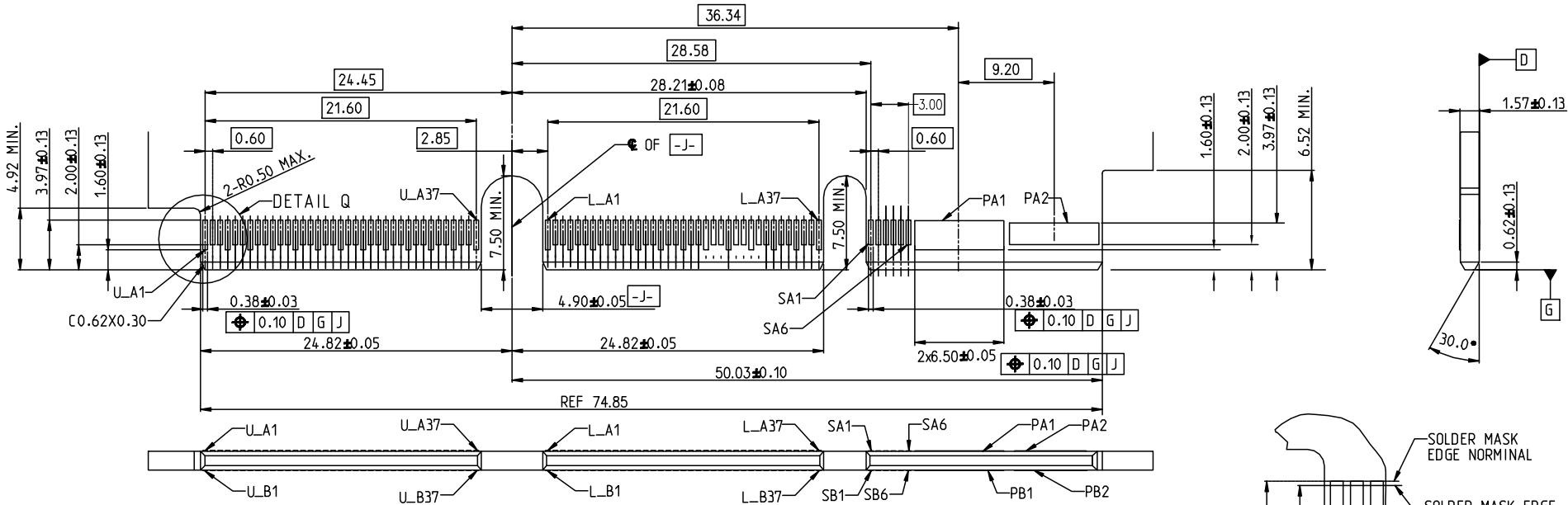
- 3.The gap between terminals, solder leg position, and flatness dimensions should be measured 100%.
 4.V-CUT or tape cutting position burr 0.08MAX.
 5.The product complies with the standards of ROSH2002/95/EC and environmental protection 2000/53/EC.

6.ORDERING CODE:

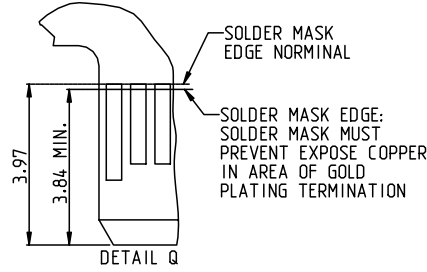


RoHS COMPLIANT	Unit: mm (inch)	PROJECTION	JPC connectivity		PD./FILE NO.
	GENERAL TOLERANCES: (UNLESS SPECIFIED)	D.R. 11/28/2023			TITLE
	0 = ±.50	Veera	Multi-Trak (SFF-TA-1033) Vertical	X-XXXX	
	0.0 = ±.25	Albert	Combo x16+55A Power Connector	REV. 02	
0.000 = ±.05	APV.D 11/28/2023	SCALE	SIZE	PART NO.	SHEET 1 OF 4
0" = ±.2"	Jason	1:1	A4	P947A17246X2-0	
0.0" = ±.1"					

1	2	3	4	5	6	7	8				
THIS DRAWING AND THE DATA DISCLOSED HEREIN OR HEREWITH IS NOT TO BE REPRODUCED USED OR DISCLOSED IN WHOLE OR IN PART TO ANYONE WITHOUT THE PERMISSION OF JESS-LINK PRODUCTS CO.,LTD.(JPC)				CUSTOMER DRAWING DRWC-008614		REV.	ECN NO.	DESCRIPTION	MDF'D	APP'D	DATE
						01		INITIAL DESIGN	Veera	Jason	10/13/2023
						02		DRAWING NAME REVISED	Veera	Jason	11/28/2023
						03					

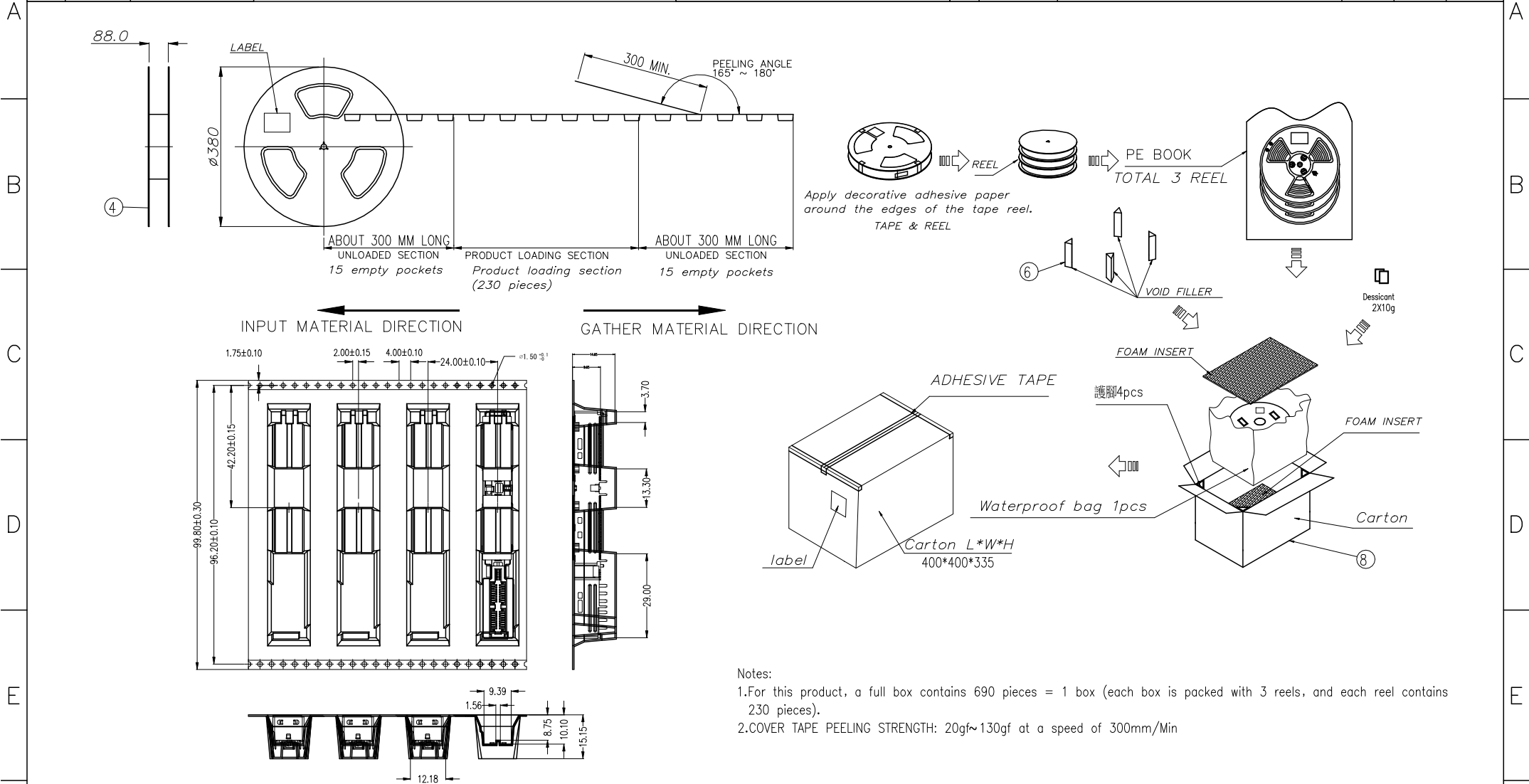


NOTE: POSITION A1 ON OPPOSITE SIDE OF CARD OF B1



RoHS COMPLIANT	Unit: mm(inch)	PROJECTION	JPC connectivity	
	GENERAL TOLERANCES: (UNLESS SPECIFIED)	D.R. 11/28/2023 Veera	TITLE	PD./FILE NO. XXXXXXXXXX
	0 = ±.50 0.0 = ±.25 0.00 = ±.15 0.000 = ±.05 0° = ±.2° 0.0° = ±.1°	CH.K 11/28/2023 Albert	Multi-Trak (SFF-TA-1033) Vertical Combo x16+55A Power Connector	X-XXXX
		APV.D 11/28/2023 Jason	SCALE 1:1 SIZE A4	PART NO. P947A17246X2-0
			REV. 02	SHEET 3 OF 4

1	2	3	4	5	6	7	8				
THIS DRAWING AND THE DATA DISCLOSED HEREIN OR HEREWITH IS NOT TO BE REPRODUCED USED OR DISCLOSED IN WHOLE OR IN PART TO ANYONE WITHOUT THE PERMISSION OF JESS-LINK PRODUCTS CO.,LTD.(JPC)				CUSTOMER DRAWING DRWC-008614		REV.	ECN NO.	DESCRIPTION	MDF'D	APP'D	DATE
						01		INITIAL DESIGN	Veera	Jason	10/13/2023
						02		DRAWING NAME REVISED	Veera	Jason	11/28/2023
						03					



- Notes:
- For this product, a full box contains 690 pieces = 1 box (each box is packed with 3 reels, and each reel contains 230 pieces).
 - COVER TAPE PEELING STRENGTH: 20gf~130gf at a speed of 300mm/Min

RoHS COMPLIANT	Unit: mm(inch)	PROJECTION	JPC connectivity	
	GENERAL TOLERANCES: (UNLESS SPECIFIED)			
	0 = ±.50	D.R. 11/28/2023	TITLE	PD./FILE NO.
	0.0 = ±.25	Veera	Multi-Trak (SFF-TA-1033) Vertical	XXXXXXXXXX
0.00 = ±.15	CH.K 11/28/2023	Combo x16+55A Power Connector	X-XXXX	
0.000 = ±.05	Albert	SCALE	SIZE	PART NO.
0' = ± 2'	APV.D 11/28/2023	1:1	A4	P947A17246X2-0
0.0' = ± 1'	Jason	REV.	02	SHEET 4 OF 4